

GENERAL HIGHWAY MAP
MARICOPA COUNTY, ARIZONA

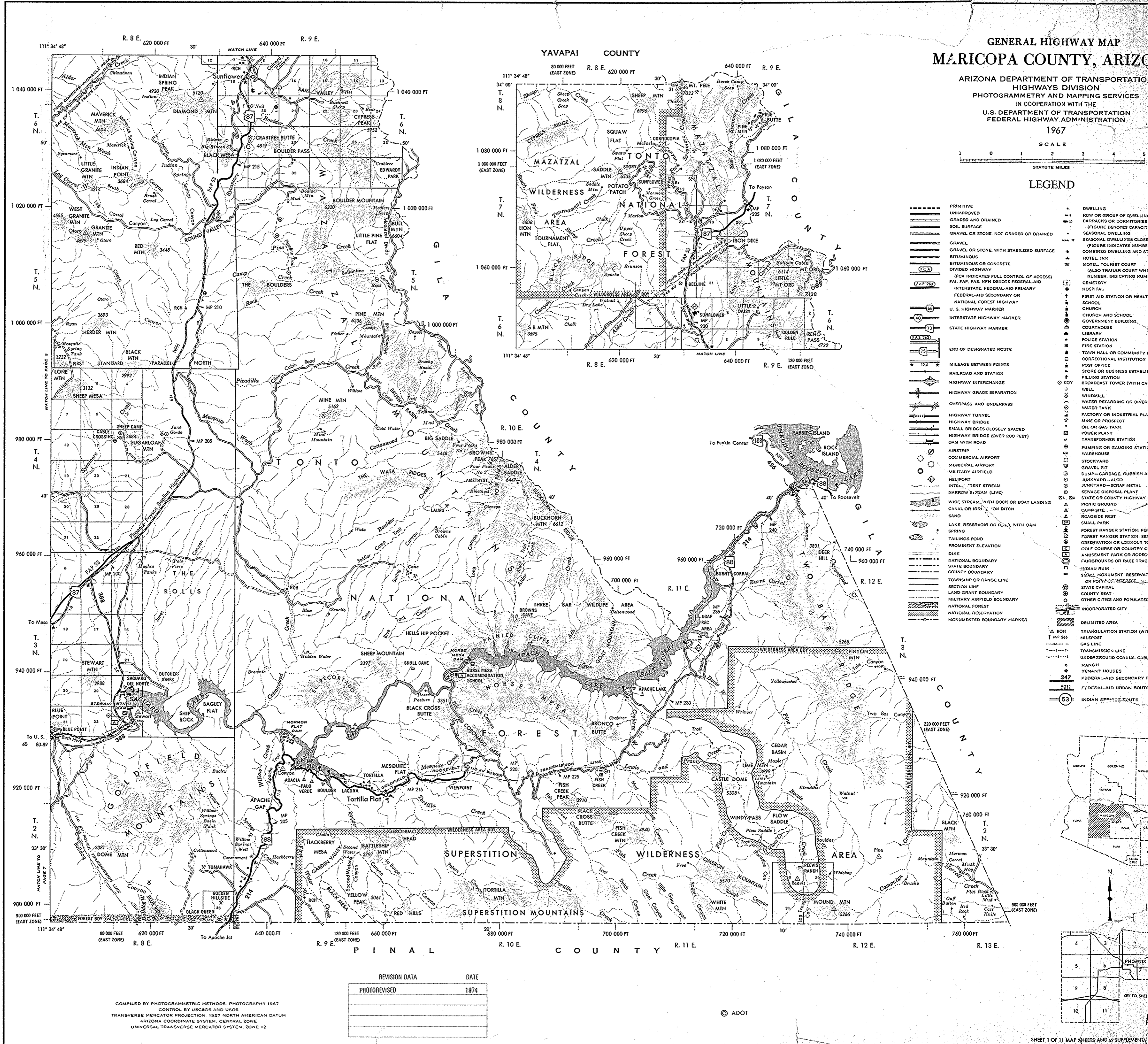
ARIZONA DEPARTMENT OF TRANSPORTATION
HIGHWAYS DIVISION
PHOTOGRAMMETRY AND MAPPING SERVICES
IN COOPERATION WITH THE
U.S. DEPARTMENT OF TRANSPORTATION
FEDERAL HIGHWAY ADMINISTRATION

1967



LEGEND

- PRIMITIVE
- UNIMPROVED
- GRADED AND DRAINED
- SOIL SURFACE
- GRAVEL OR STONE, NOT GRADED OR DRAINED
- GRAVEL
- GRAVEL OR STONE, WITH STABILIZED SURFACE
- BITUMINOUS
- BITUMINOUS OR CONCRETE
- DIVIDED HIGHWAY
- (FCA) (FCA INDICATES FULL CONTROL OF ACCESS)
- (FAP, FAS, NPH) (FAP, FAS, NPH DENOTE FEDERAL-AID INTERSTATE, FEDERAL-AID PRIMARY, FEDERAL-AID SECONDARY OR NATIONAL FOREST HIGHWAY)
- U. S. HIGHWAY MARKER
- INTERSTATE HIGHWAY MARKER
- STATE HIGHWAY MARKER
- (FAS 212)
- (FAS 213)
- END OF DESIGNATED ROUTE
- 12.5
- RAILROAD AND STATION
- HIGHWAY INTERCHANGE
- HIGHWAY GRADE SEPARATION
- OVERPASS AND UNDERPASS
- HIGHWAY TUNNEL
- HIGHWAY BRIDGE
- SMALL BRIDGES CLOSELY SPACED
- HIGHWAY BRIDGE (OVER 200 FEET)
- DAM WITH ROAD
- AIRSTRIP
- COMMERCIAL AIRPORT
- MUNICIPAL AIRPORT
- MILITARY AIRFIELD
- HELIPORT
- INTEL. "TENT STREAM"
- NARROW S. PEAM (LIVE)
- WIDE STREAM, WITH DOCK OR BOAT LANDING
- CANAL OR IRRIGATION DITCH
- SAND
- LAKE, RESERVOIR OR POND, WITH DAM
- SPRING
- TAILINGS POND
- PROMINENT ELEVATION
- DIKE
- NATIONAL BOUNDARY
- STATE BOUNDARY
- COUNTY BOUNDARY
- TOWNSHIP OR RANGE LINE
- SECTION LINE
- LAND GRANT BOUNDARY
- MILITARY AIRFIELD BOUNDARY
- NATIONAL FOREST
- NATIONAL RESERVATION
- MONUMENTED BOUNDARY MARKER
- DWELLING
- ROW OR GROUP OF DWELLINGS
- BARRACKS OR DORMITORIES
- (FIGURE DENOTES CAPACITY)
- SEASONAL DWELLING
- SEASONAL DWELLINGS CLOSELY SPACED
- (FIGURE INDICATES NUMBER OF COMBINED DWELLING AND STORAGE)
- HOTEL, INN
- MOTEL, TOURIST COURT
- (ALSO TRAILER COURT WHEN NUMBER INDICATING NUMBER)
- CEMETERY
- HOSPITAL
- FIRST AID STATION OR HEALTH CENTER
- SCHOOL
- CHURCH
- CHURCH AND SCHOOL
- GOVERNMENT BUILDING
- COURTHOUSE
- LIBRARY
- POLICE STATION
- FIRE STATION
- TOWN HALL OR COMMUNITY HALL
- CORRECTIONAL INSTITUTION
- POST OFFICE
- STORE OR BUSINESS ESTABLISHMENT
- FILLING STATION
- BROADCAST TOWER (WITH CALL LETTERS)
- WELL
- WINDMILL
- WATER RETARDING OR DIVERSION
- WATER TANK
- FACTORY OR INDUSTRIAL PLANT
- MINE OR PROSPECT
- OIL OR GAS TANK
- POWER PLANT
- TRANSFORMER STATION
- PUMPING OR GAUGING STATION
- WAREHOUSE
- STOCKYARD
- GRAVEL PIT
- DUMP—GARBAGE, RUBBISH AND JUNKYARD—AUTO
- JUNKYARD—SCRAP METAL
- SEWAGE DISPOSAL PLANT
- STATE OR COUNTY HIGHWAY MAINTENANCE
- CAMP-SITE
- ROADSIDE REST
- SMALL PARK
- FOREST RANGER STATION; PERMANENT FOREST RANGER STATION; SEASONAL OBSERVATION OR LOOKOUT TOWER
- GOLF COURSE OR COUNTRY CLUB
- AMUSEMENT PARK OR RODEO GROUND
- FAIRGROUNDS OR RACE TRACK
- INDIAN RUIN
- SMALL MONUMENT, RESERVATION OR POINT OF INTEREST
- STATE CAPITAL
- COUNTY SEAT
- MILITARY AIRFIELD BOUNDARY
- NATIONAL FOREST
- NATIONAL RESERVATION
- MONUMENTED BOUNDARY MARKER
- DELIMITED AREA
- TRIANGULATION STATION (WITH MILEPOST)
- GAS LINE
- TRANSMISSION LINE
- UNDERGROUND COAXIAL CABLE
- RANCH
- TENANT HOUSES
- FEDERAL-AID SECONDARY ROUTE
- FEDERAL-AID URBAN ROUTE
- INDIAN SERVICE ROUTE



REVISION DATA	DATE
PHOTOREVISED	1974

COMPILY BY PHOTOGRAMMETRIC METHODS, PHOTOGRAPHY 1967
CONTROL BY USGS AND USGS
TRANSVERSE MERCATOR PROJECTION, 1927 NORTH AMERICAN DATUM
ARIZONA COORDINATE SYSTEM, CENTRAL ZONE
UNIVERSAL TRANSVERSE MERCATOR SYSTEM, ZONE 12

© ADOT